

Gorm Sørensen

# ProCal



## ProCal - Gorm Sørensen

Sandshagan 11  
Jessheim, N 2067

**Gorm Sørensen**

Telefon: +47 41 51 61 71

Epost: gorm@procal.no

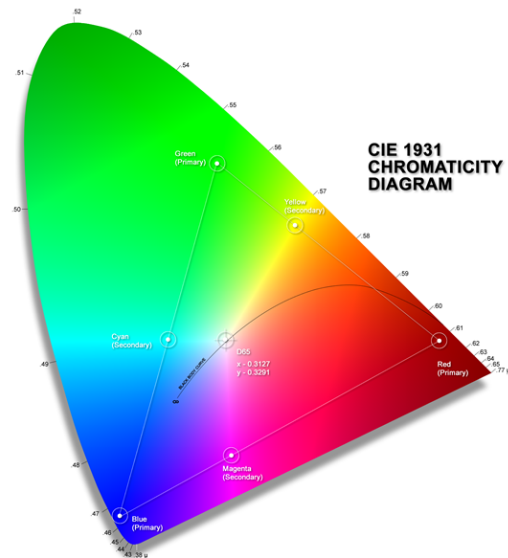
ISF level II certified

THX level II video calibrator

## Lyd&Bilde Epson TW6600

Telefon:

Epost:



## METER Klein Instruments K Series

Manufacturer: Klein Instruments  
Model: K-10  
Meter Serial: 00100004

## SOURCE AV Foundry VideoForge

Model: AV Foundry - VideoForge Classic (Ethernet @9021)  
Info: VideoForge software

## DISPLAY / PROCESSOR Direct Display Control

Model: None  
Type:  
Info1:

## CALIBRATION STANDARD

Nominal Signal Levels: True  
Luminance Response Model: PowerFunction  
Gamma: 2.2  
Color Space Target: D65, HD Rec.709

## Pre Calibration Settings

PictureMode: Cinema  
ColorTemp: 1  
Gamma: 0  
BackLight:  
Brightness: 0                      Contrast: 0  
Color: 0                              Tint: 0  
Sharpness: standard

### High

Red	Green	Blue
0	0	0

### Low

Red	Green	Blue
0	0	0

Pre-Calibration Notes: default bidemodus: Auto

## Post Calibration Settings

Picture Mode: Natural  
ColorTemp: 0  
Gamma: -2  
BackLight:  
Brightness: 0                      Contrast: -3  
Color: 0                              Tint: 0  
Sharpness: standard

### High

Red	Green	Blue
1	0	-1

### Low

Red	Green	Blue
-5	5	9

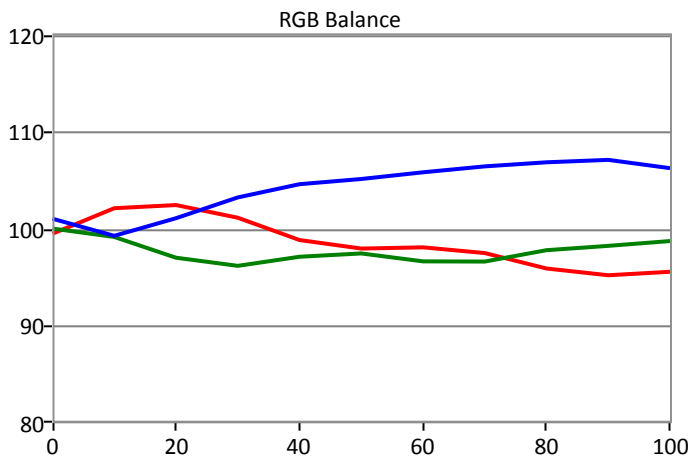
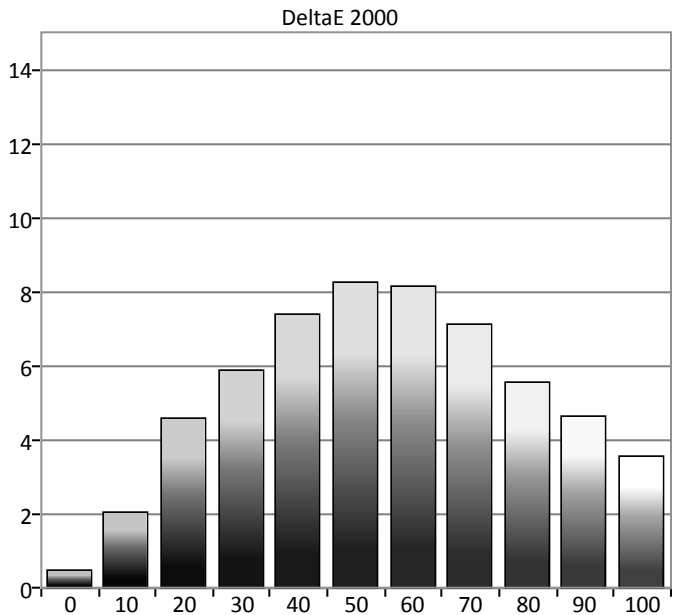
Post-Calibration Notes: Kalibrert minne: Cinema Film 1

Lampe: Eco  
ColorSpace: BT709  
CMS er kalibrert

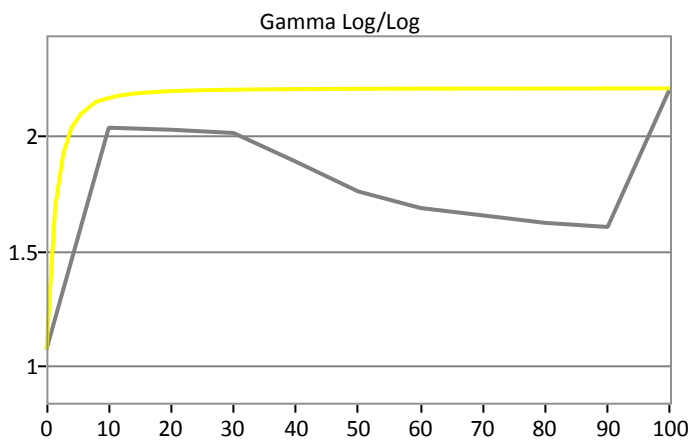
Motion Enhancer: Low  
Contrast Enhancer: Low

## Pre Calibration Results

CollectionMax dE2000: 8.29

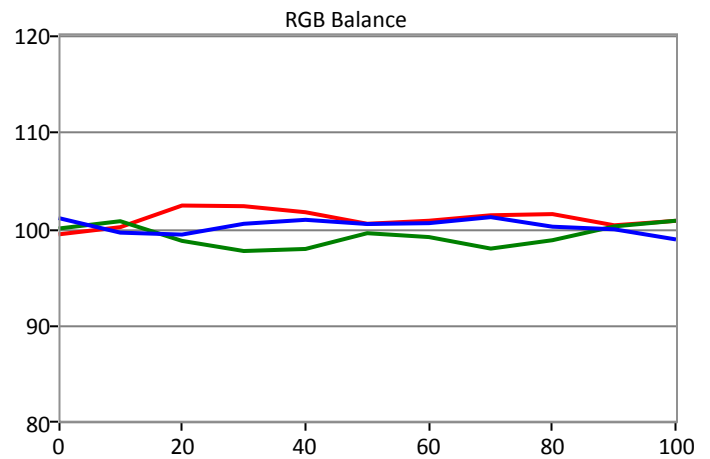
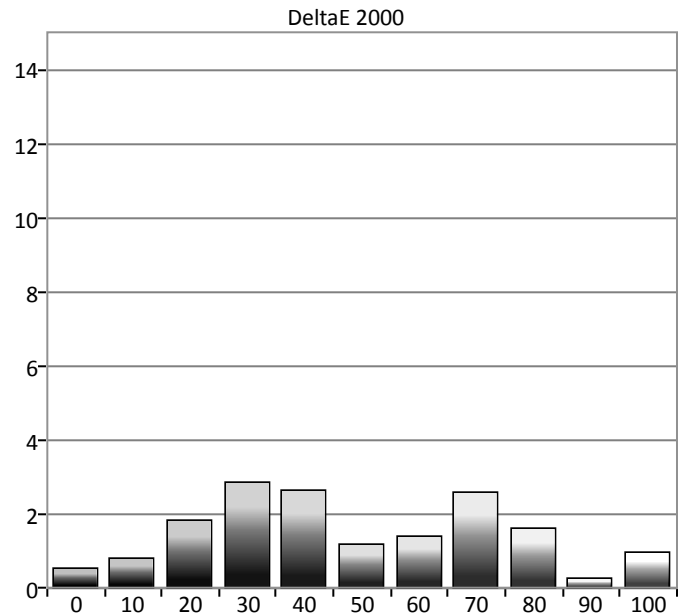


Total Gamma: 1.8

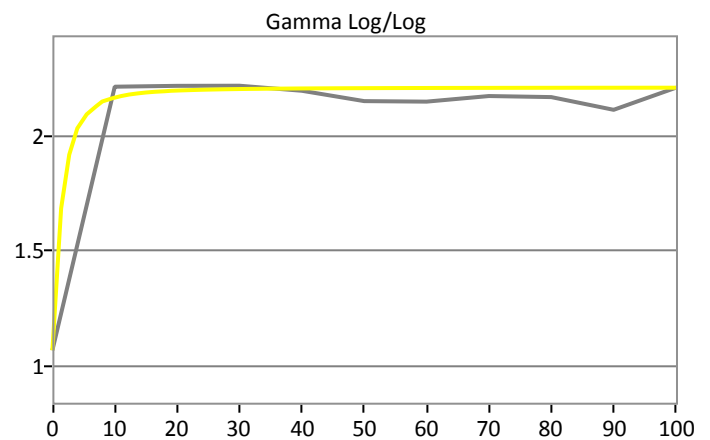


## Post Calibration Results

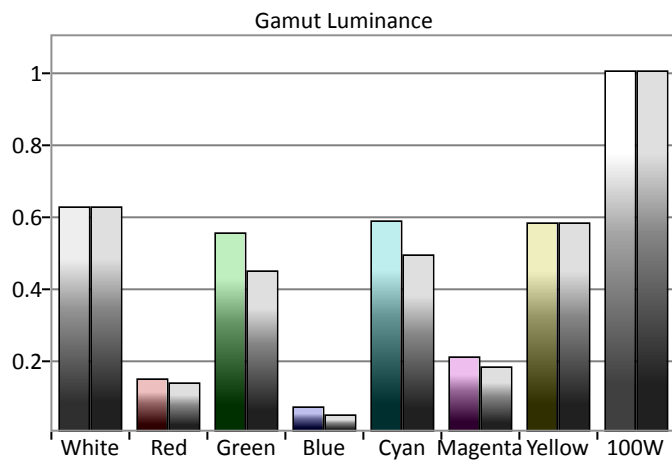
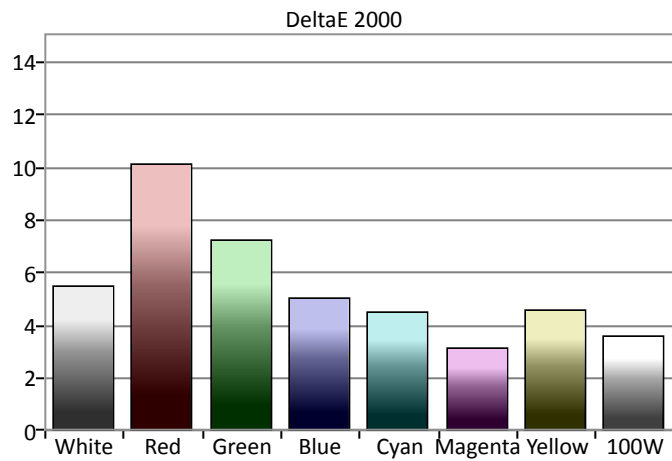
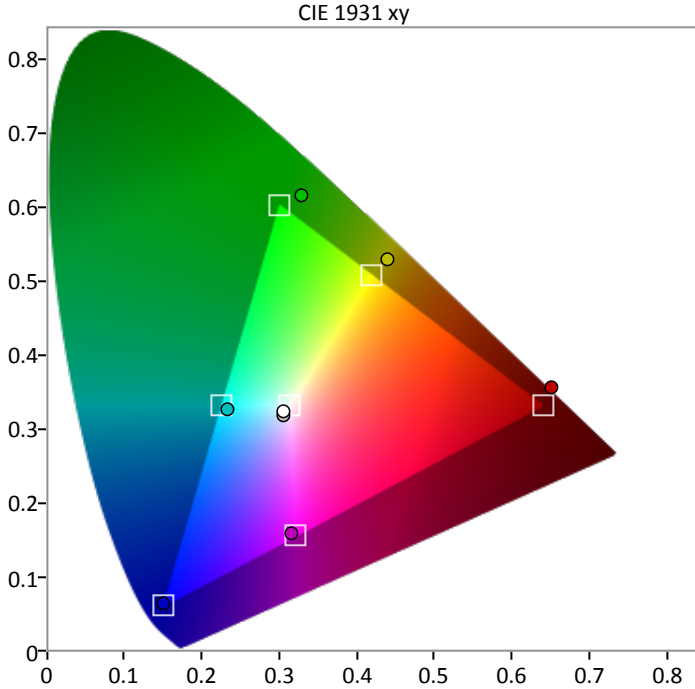
CollectionMax dE2000: 2.85



Total Gamma: 2.17



## Pre Calibration Results



## Post Calibration Results

